

FEKABOX 110

1 PUMP AUTOMATIC LIFTING STATIONS



TECHNICAL DATA

Operating range:

from 1 to 24 m³/h with head up to 9 metres.

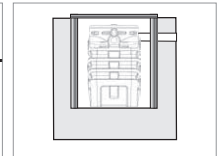
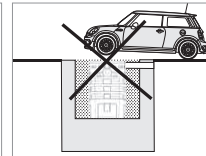
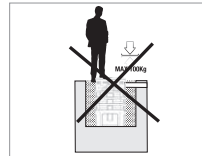
Liquid temperature range: + 45° C**Pumped liquid:**

waste water and domestic drains.

Liquids compatible with EN12050 2.

Installation: inside the building, secured to the floor.

It cannot be driven or walked on.



APPLICATIONS

Pumping stations suitable for the collection and redirection to the sewer network, of domestic drain water (waste, dirty, rain), of basements and garages, for one dwelling, when the sewer network cannot be reached due to gravity issues.

CONSTRUCTION FEATURES

CAPACITY: 110 l

MATERIALS: LLDPE

REGULATIONS: 12050-2

CONNECTIONS

- Inputs DN 50/110
- Ventilation DN 50
- Horizontal or vertical G2" output

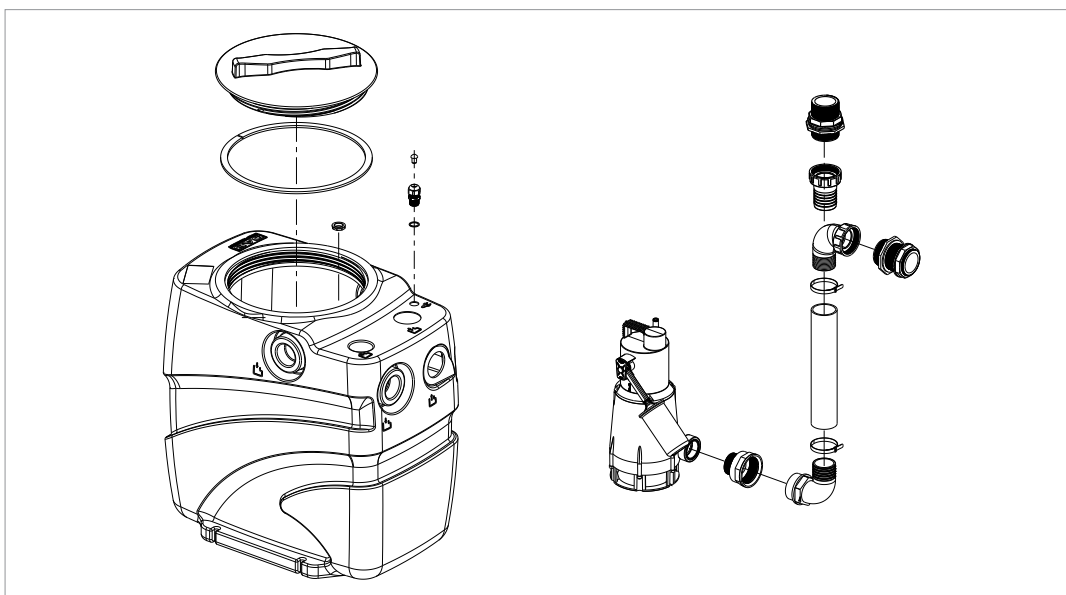
COMPONENTS INCLUDED:

- Complete pump installation kit (see pump installation image).
- Cable gland for individual pump
- 2" F x 1 x ¼ M connector for FEKA 600

COMPONENTS NOT INCLUDED

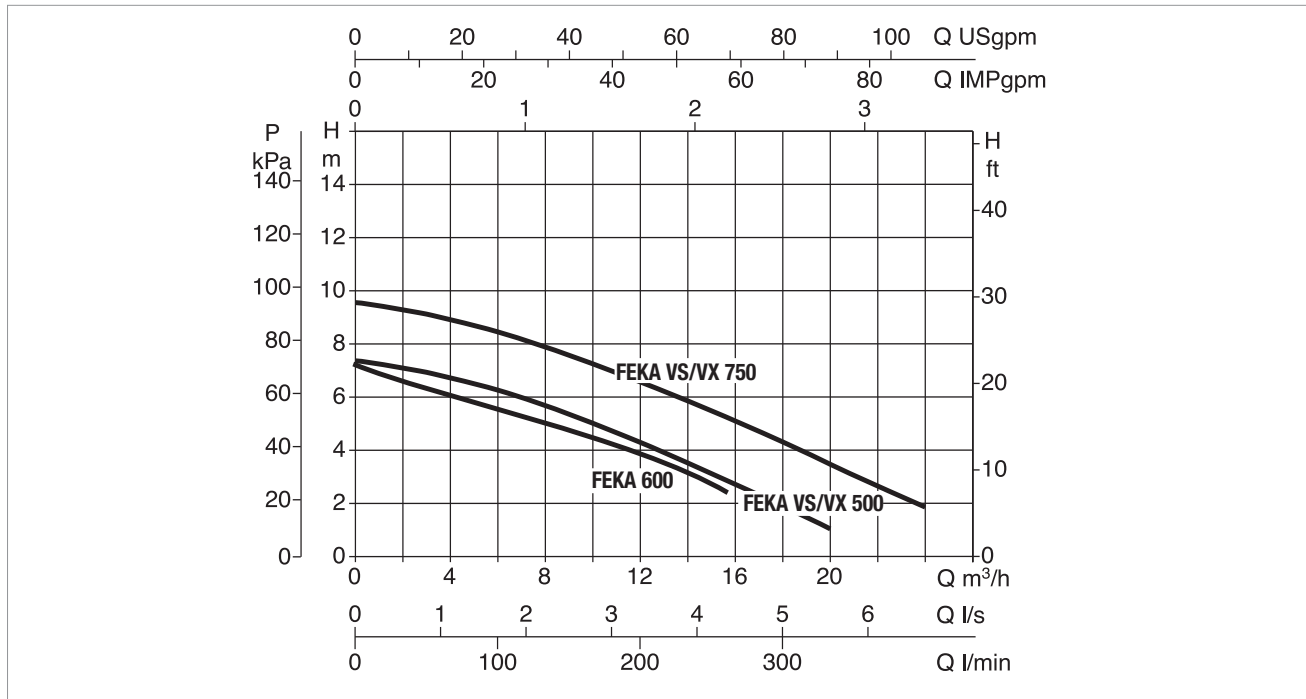
- Pump: to be selected according to the possible configurations.

PUMP INSTALLATION



FEKABOX 110 - AUTOMATIC WASTE WATER LIFTING AND COLLECTION STATIONS

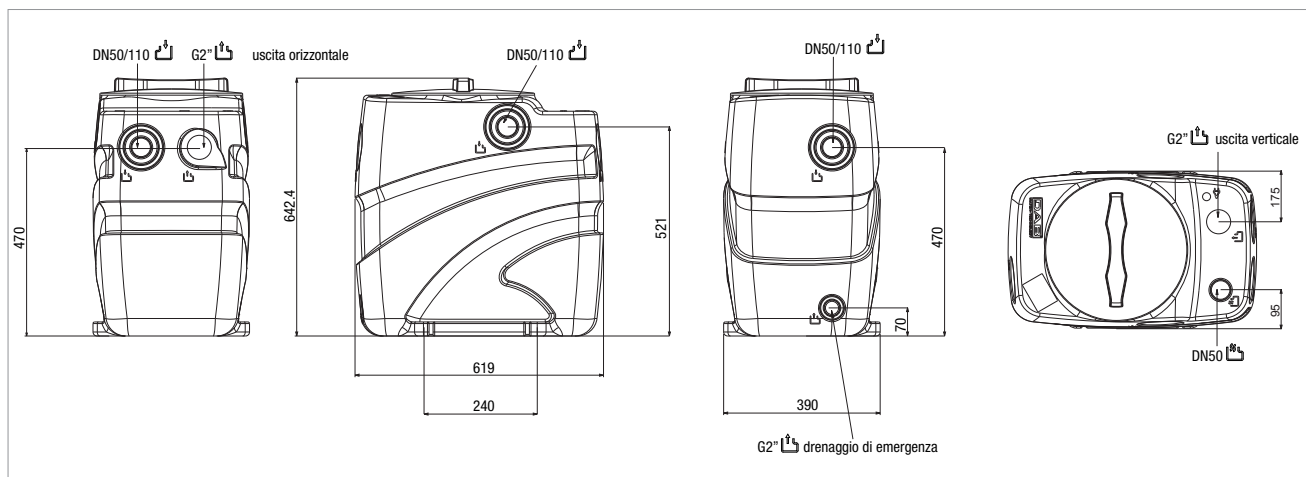
Liquid temperature range: +50 °C



The performance curves are based on kinematic viscosity values = 1 mm²/s and density equal to 1000 kg/m³.
Curve tolerance according to ISO 9906.

CONFIGURATIONS

PUMP MODEL	ELECTRICAL DATA				
	POWER INPUT 50 HZ	P1 MAX kW	P2 NOMINAL		In A
			kW	HP	
FEKA 600 M-A	1X220-240 V~	1	0.55	0.75	4.3
FEKA VS/VX 550 M-A	1X220 - 240 V~	0.9	0.55	0.75	4.2
FEKA VS/VX 750 M-A	1X220 - 240 V~	1.1	0.75	1	5.13



SIZES AND WEIGHTS

PACKING DIMENSIONS			WEIGHT Kg
L/A	L/B	H	
650	400	665	10.3

LEGEND:

- Emergency output or delivery piping connection
- Collection piping input
- Power and float cable output
- Ventilation pipe connection
- Recyclable material